

Combined and implant-retained dental prostheses with passive fit using
SAE spark erosion **NEW – RetroFit**

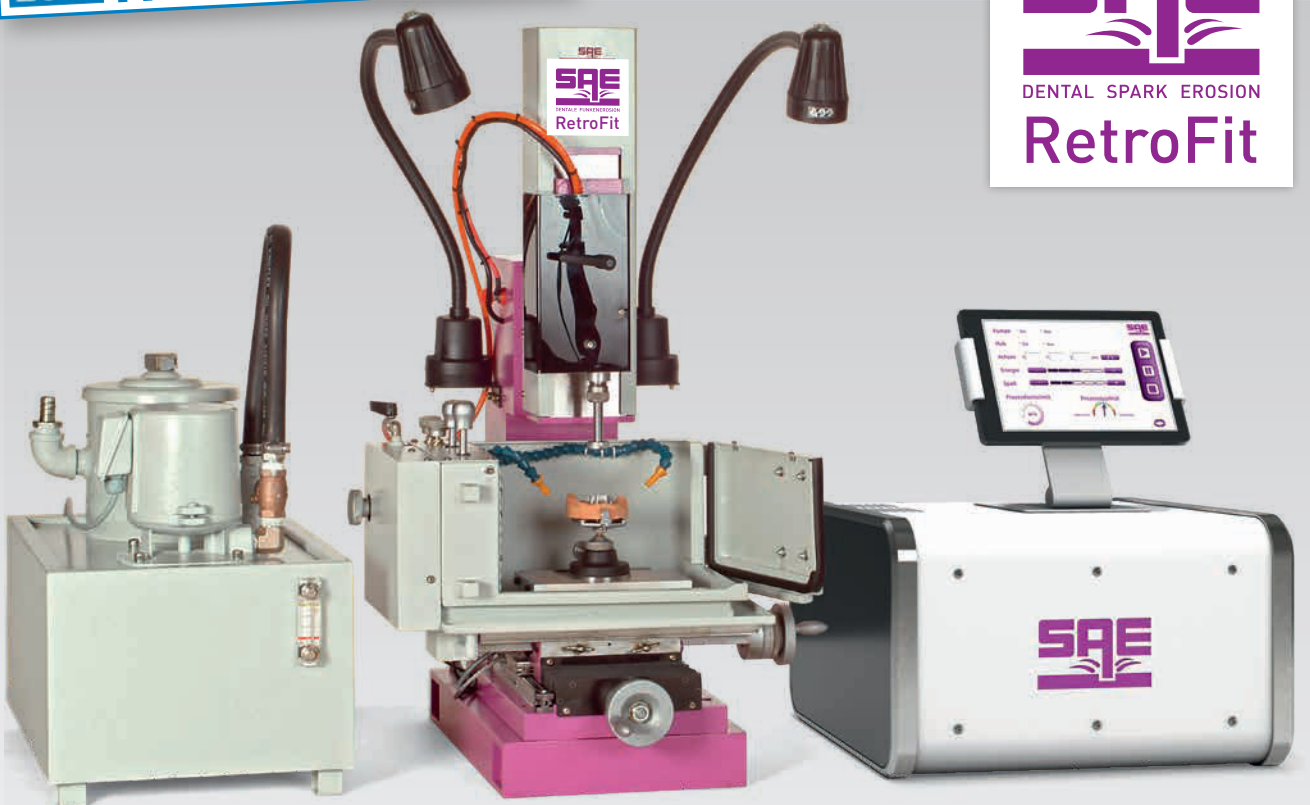
SENSATION IN THE DENTAL SPARK EROSION TECHNOLOGY!

**NEW 2019: SAE spark erosion technology –
optimised processing results with the newly developed generator technology RetroFit.**

Original abutments made of titanium V as wear-free electrode material with standardised or customized surface, for spark erosive processing of structures on implants and secondary double crowns made of CoCrMo-titanium – laser sintered – for passivation.

Standard use for dental prostheses with double crowns – cast, CAD/CAM-milled, laser sintered from CoCrMo – SLM technique, for connecting elements:
T-attachments / swivel latches and pin attachments / friction pins

IDS 2019 Live Demo at the IDS 2019
Hall 10.2 V058



EDM high tech generator 2019 / innovative navigation / high power impulses / automated navigation of all application parameters via tablet

First spark erosion: exact fit without gap, ultra-fine, smooth surfaces.

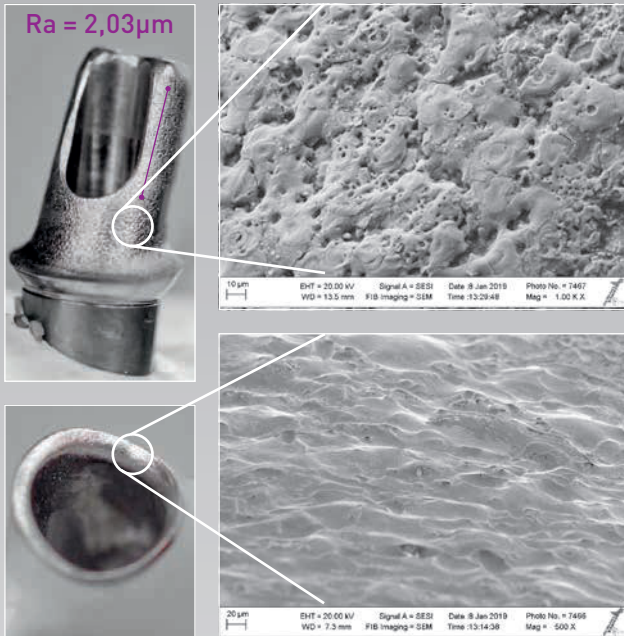
The SAE range EDM 1000/2000 can be converted with the generator RetroFit.
Installation by our service technician on-site, and with briefing.



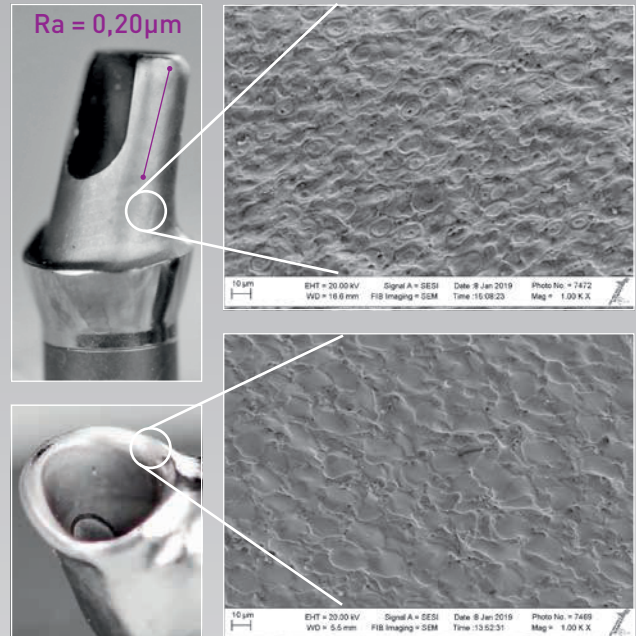
SAE DENTAL VERTRIEBS GMBH

Langener Landstraße 173 · D-27580 Bremerhaven
Tel.: 0471 - 9 84 87 45 · Fax: 0471 - 9 84 87 44
E-Mail: info@sae-dental.de · www.sae-dental.de

Working results new generator technique – SAE – Customized original abutments made of titanium V as wear-free electrode material for the processing of CoCrMo



Processing using generator 2014



Processing using generator **RetroFit 2019**

NEW

SAE working results new generator technique – Standard uses



**T-Attachment,
working step rough machining**



**Swivel latch,
working step rough machining**